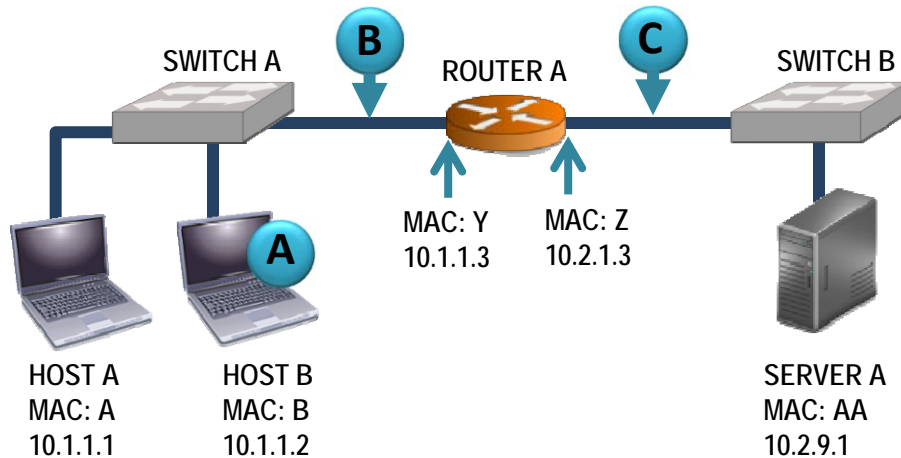


WCNA Boot Camp Challenge 1

Capture points: **A** **B** **C**



You have spanned all switch port 1 traffic to switch port 2. Answer the question for each capture point shown in the image.

When Capturing at Point A

What should the source and destination MAC addresses be for a packet sent from Host A to Server A?

Source MAC: _____ Destination MAC: _____

When Capturing at Point B

What should the source and destination MAC addresses be for a packet sent from Host A to Server A?

Source MAC: _____ Destination MAC: _____

When Capturing at Point C

What should the source and destination MAC addresses be for a packet sent from Host A to Server A?

Source MAC: _____ Destination MAC: _____