

**Trust** | SMART Home

By: **KlikAan** **KlikUit**<sup>®</sup>

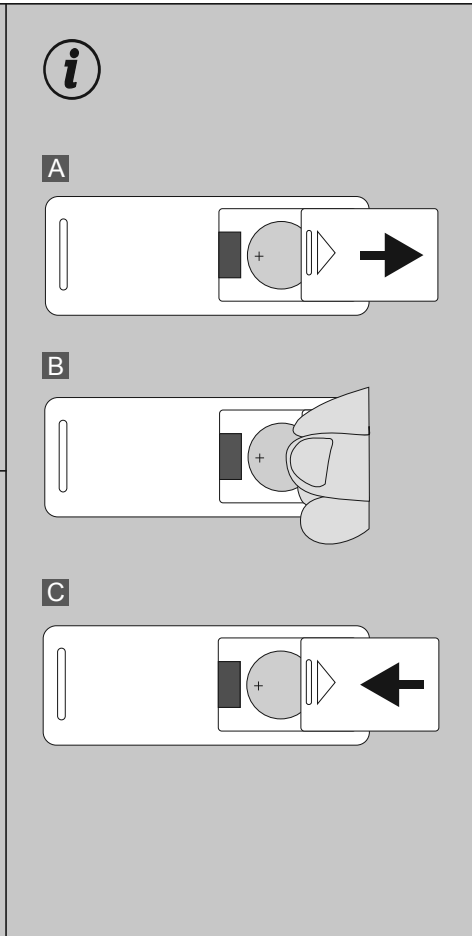
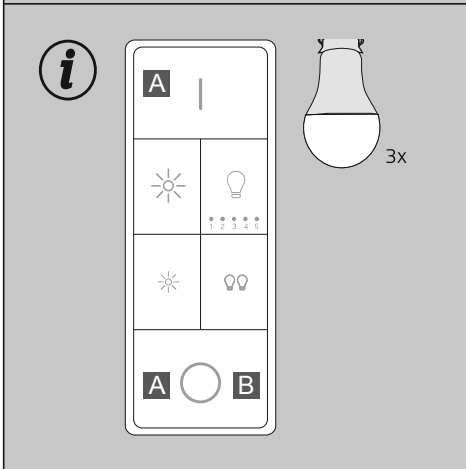
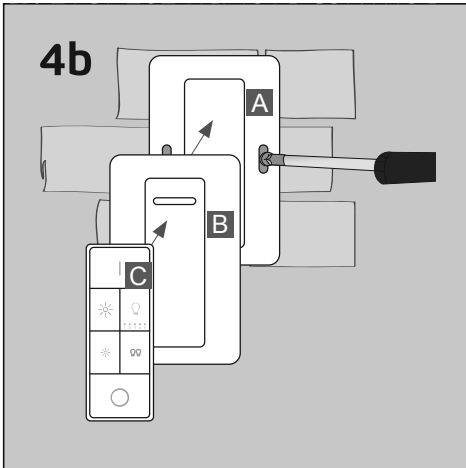
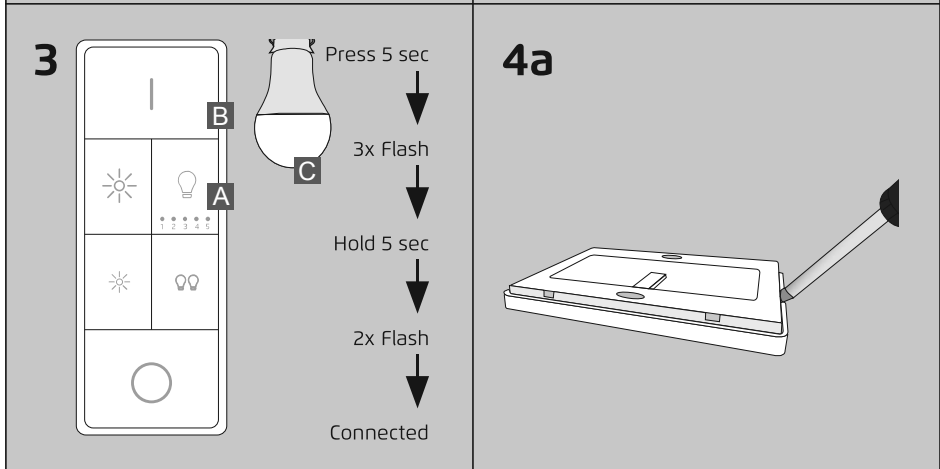
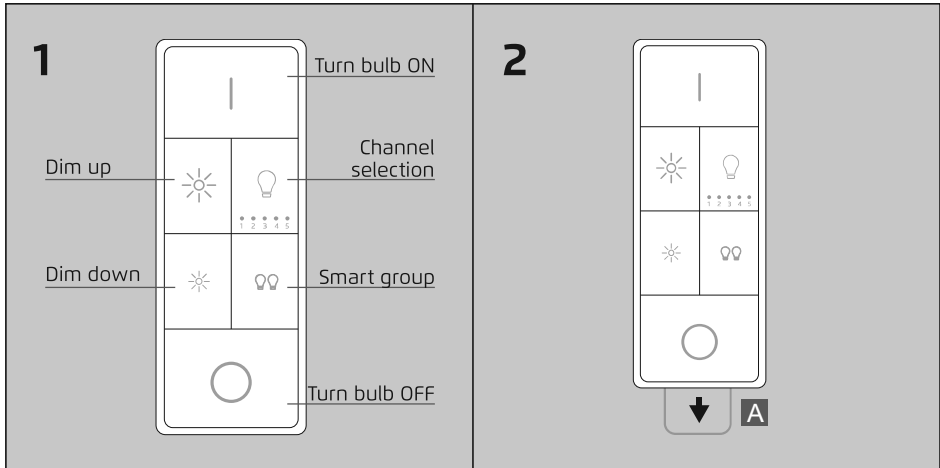
# USER MANUAL

---

REMOTE CONTROL  
ZYCT-202









Item 71171 Version 1.0  
Visit [www.trust.com/zigbee](http://www.trust.com/zigbee) for the latest instructions



**COMPATIBILITY**

The ZYCT-202 works with the Z1 ZigBee Bridge, ICS-2000 control station and other Zigbee certified devices such as Philips Hue (compatibility on [trust.com/zigbee](http://trust.com/zigbee)). With the ZYCT-202 it is not possible to control the colors for the ZRGB-9 and the ZLED-9CW, for this we advise to use the Z1 ZigBee Bridge or the ICS-2000.

**1. BUTTONS**

	ON button to turn your lights/devices ON
	OFF button to turn your lights/devices OFF
	Dim up to increase the light brightness. Keep pressed for continuous dimming
	Dim down to decrease the light brightness. Keep pressed for continuous dimming
	Bulb selection. Press repeatedly to cycle through the bulb channels.
	Press the smart group button to control all bulbs simultaneously

**2. REMOVE PULL STRIP**

**A** Remove the battery pull strip by pulling it from the remote control. Only after removing the pull strip the remote can be used.

**3. CONNECT REMOTE WITH BULB**

- A** First select the bulb channel you want to control the bulb with.
- B** Hold the remote as close as possible to the bulb and press and hold the ON button to connect it.
- C** Keep the ON button pressed until the bulb turns on and off 3x. Keep holding the ON button until the bulb will flash 2x to acknowledge that the connection succeeded. Note: To connect the remote

with the Z1 bridge or ICS-2000 follow the steps in the online (advanced) manual of the Z1 ZigBee bridge or ICS-2000. ([trust.com/zigbee](http://trust.com/zigbee))


**4. INSTALLING THE WALL MOUNT**

Remove the backplate of the wall mount by lifting it up with a flat screwdriver.

- A** Place the backplate on a flat surface and secure it tightly with screws or use double sided tape.
- B** Attach the wall mount on the backplate.
- C** Place the remote on the wall mount.

**i RESET BULB (CONNECT MODE) OR REMOTE**

**A** You can reset a bulb and put it back in connect mode by holding the remote as close as possible to the bulb and press the ON and OFF button simultaneously. Keep holding the buttons until the bulb flashes 3x and then stays on to confirm the reset.

**B**  Warning: This step will remove all connected bulbs. To reset the remote press the OFF button for 10 sec until all LEDs beneath the channels will light up to confirm the reset.

**i CHANGE BATTERY**

- A** Open the battery compartment.
- B** Remove the empty battery and insert a new 3V







CR2450 lithium battery in the compartment. Note the positive and negative polarity.

**C** Close the battery compartment.

**KOMPATIBILITÄT**

Die ZYCT-202 funktioniert mit unserer Z1 ZigBee Bridge, ICS-2000 Steuerstation und anderen zertifizierten ZigBee-Geräten wie Philips Hue (Kompatibilität auf [trust.com/zigbee](http://trust.com/zigbee)). Mit der ZYCT-202 ist es nicht möglich, die Farben der ZRGB-9 oder ZLED-9CW zu steuern; wir empfehlen für diese Zwecke die Verwendung der Z1 ZigBee Bridge oder der ICS-2000.

**1. TASTEN**

	ON-Taste zum Einschalten von Lichtern/Geräten
	OFF-Taste zum Ausschalten von Lichtern/Geräten
	Heller für helleres Licht. Für kontinuierliches Dimmen die Taste gedrückt halten
	Dunkler für dunkleres Licht. Für kontinuierliches Dimmen die Taste gedrückt halten
	Birnenauswahl. Drücken Sie wiederholt, um zyklisch durch die Birnenkanäle zu schalten.
	Drücken Sie auf die smarte Gruppentaste, um alle Birnen gleichzeitig zu steuern