

Light is OSRAM

LIGHTIFY App - User-Guide

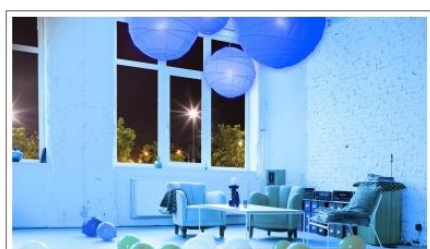
App Version 1.9.2



Discover a new dimension of light

- Control your lights individually or in groups – at home or on the go.
- Recall preset scenes at any time – it’s easy and convenient!
- Give your home an individual touch and choose the right light atmosphere for any occasion.
- Use your light to relax or to work – with the tunable white function the perfect light for your personal needs is just a swipe away!
- Use the timer function to automate your lights.

LIGHTIFY App for Android and iOS:



Content

Overview: Symbols and Connection	2
Home: Groups and Scenes	3
Devices: Control and Personalisation	5
Extras: Timer Features	14
Settings	19

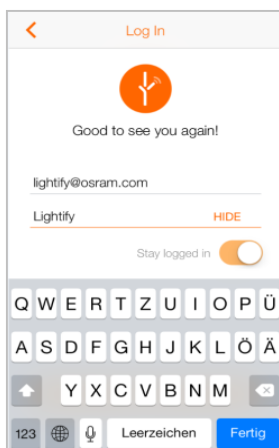
Light is OSRAM

Status

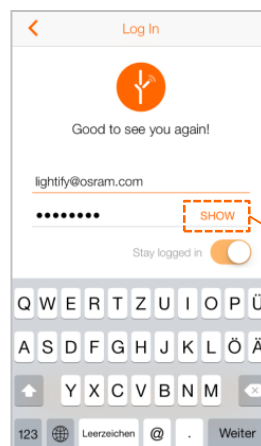
Possibilities with LIGHTIFY

Your connection to LIGHTIFY

- Your lights can be controlled via smartphone from your home or on the go.
- The symbol on the upper left side of the display gives you the information about the current status of the connection.
- For local control (from within the home Wi-Fi but without internet connection) the functionality of the App is limited. For example it is not possible to store settings or add new lights.
- Should you have no connection, please check your internet and Wi-Fi connection or move within reach of your LIGHTIFY system.



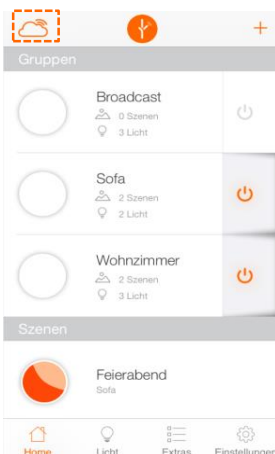
Password shown



Password hidden

Tap here to show the password

Symbols



Cloud connection (from outside the home Wi-Fi)



Cloud connection with internet access via the home Wi-Fi



Local control (no internet connection – limited functionality)



No connection

Light is OSRAM

Home

Standard settings, status overview, groups and scenes

Connection status

Tap here to change the settings of the group (colour, colour temperature, dimming level) or to change the name of the group

Tap here to change the settings of the scene (colour, colour temperature, dimming level)

Tap here to add a group

All ON (orange) / All OFF (grey)

Tap here to manage the group's general settings: add or delete participants, delete scenes

Switch group On or Off (including status)

Tap here to recall scene

Tapping on the symbols recalls the respective menu item – the active one is marked orange

Group settings

Back to "Home"

Dynamic Scenes

Change colour*

Choose between warm- and cool white**

Dimming

Tap here to add scene

Tap here to rename group

Tap here to add colour to Favorites

Switch group On or Off (including status)

Tapping on the symbols recalls the respective menu item – the active one is marked orange.

Light Control Dynamic Scenes Favorites Camera

* Only for RGB products available
 ** Only for products with Tunable White functionality

Light is OSRAM

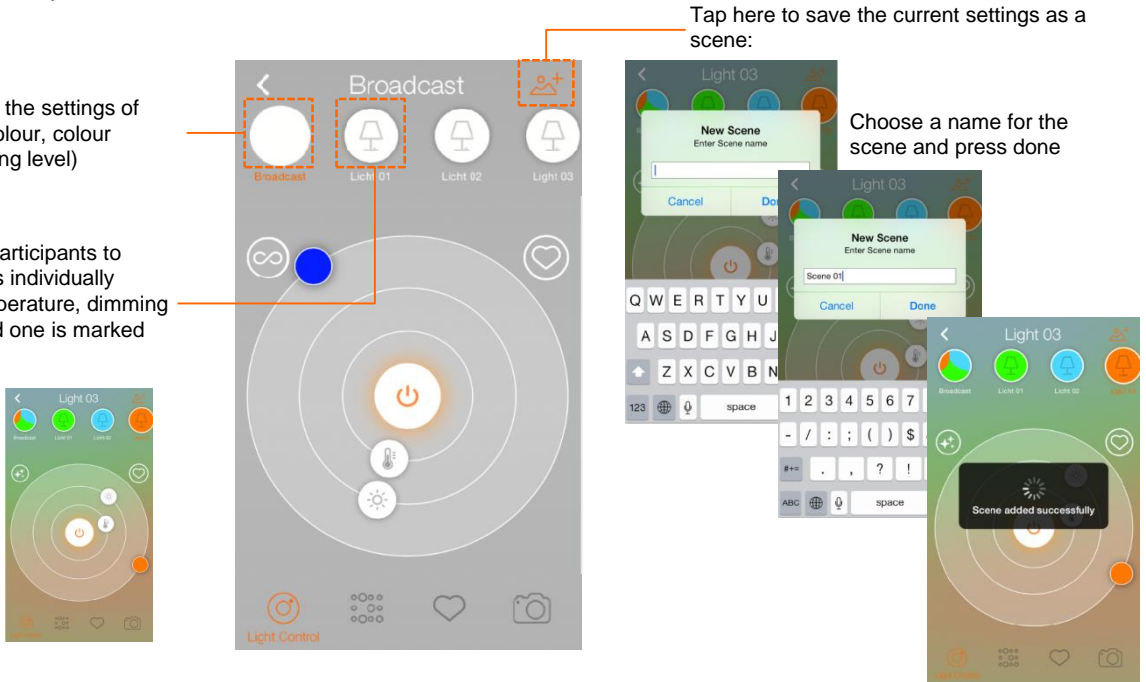
Home

Set Scenes

Open the group to which you want to add the scene.

Tap here to change the settings of the entire group (colour, colour temperature, dimming level)

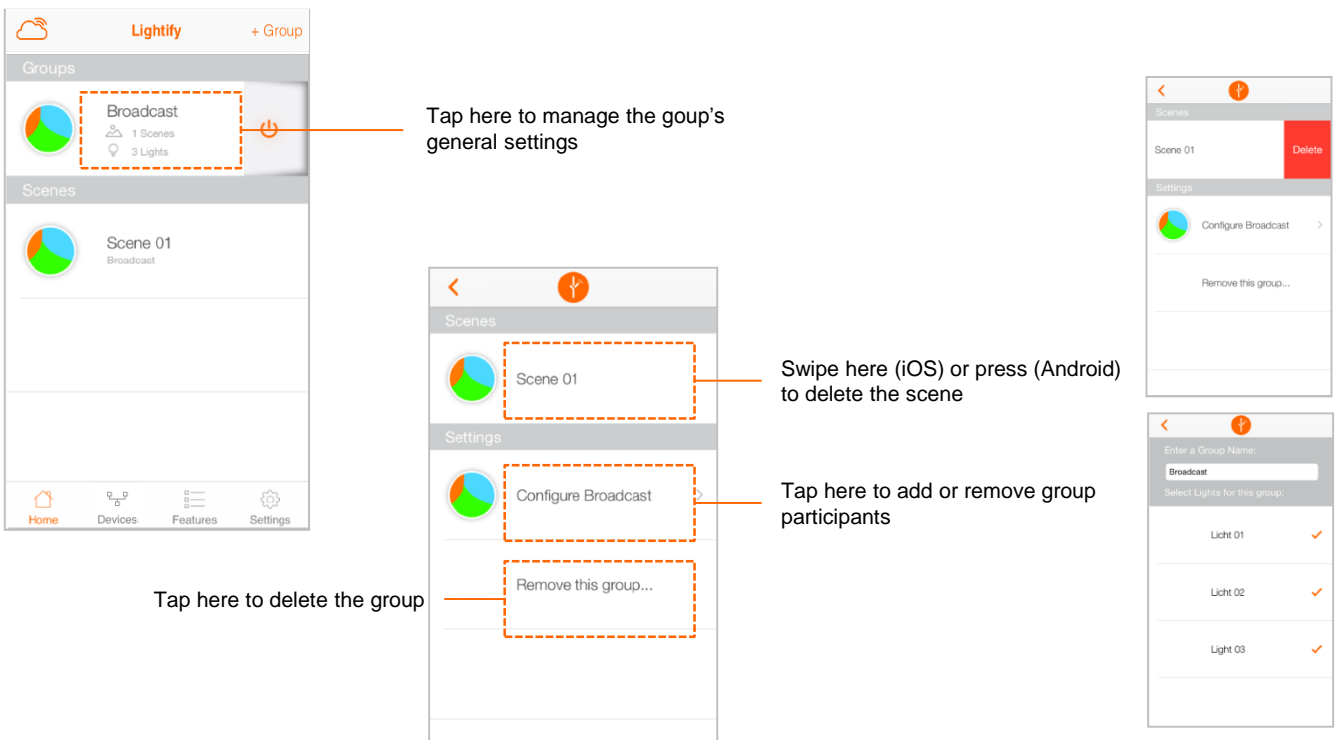
Tap on the group participants to change the settings individually (colour, colour temperature, dimming level). The selected one is marked orange.



Tap here to save the current settings as a scene:

Choose a name for the scene and press done

Manage group and delete scenes



Tap here to manage the group's general settings

Swipe here (iOS) or press (Android) to delete the scene

Tap here to add or remove group participants

Tap here to delete the group

Light is OSRAM

Devices

Standard settings, status overview, add or delete device

Connection status

Tap here to change the settings (colour, colour temperature, dimming level)

Tap here to add a new device:

- Add Lights/Plugs
- Add Switches
- Add Sensors

Swipe here (iOS) or press (Android) to delete the light

Switch ON or OFF (including status)

Tapping on the symbols recalls the respective menu item – the active one is marked orange

Light Control

Back to "Devices"

Tap here to change the default settings

Tap here to change the name

Tap here to add colour to Favorites

Dynamic Scenes

Switch On or Off (including status)

Choose between warm- and cool white**

Change colour*

Dimming

Tapping on the symbols recalls the respective menu item – the active one is marked orange.

Choose "Light Control"

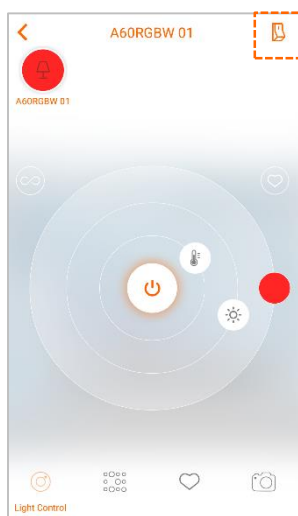
* Only for RGB products available
 ** Only for products with Tunable White functionality

Light is OSRAM

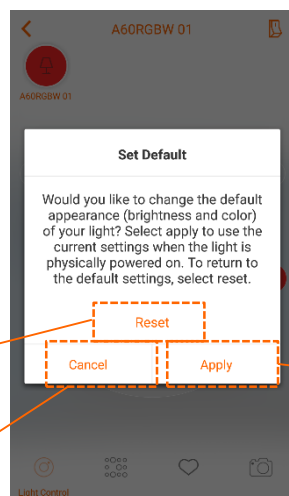
Devices

Default Setting

Select the colour or dimming level that you want to save and recall with the operation with the regular light switch.



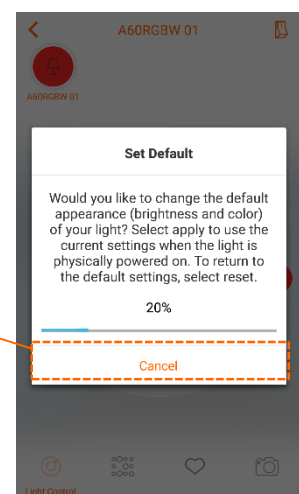
Tap here to save the selected settings as default setting or reset the default setting back to factory new



Tap here to reset the default setting back to factory new

Tap here to save the selected colour as default value

Tap here to cancel



The progress is indicated

The default setting now is stored and can be recalled with the regular light switch.

Light is OSRAM

Dynamic Scenes

Configuring Dynamic Scenes

The Dynamic Scenes create a constant change in color for color enabled lamps. You have the possibility to choose between different preset color schemes. Please make sure that the LIGHTIFY App, lamps and Gateway are up to date! Please note that dynamic scenes are stopped when another command is sent.

Tap here to recall a dynamic scene



Tap here for configuring the dynamic scene



The Loop-Speed can be altered from 5 seconds up to 60 minutes

Brightness can be adjusted here

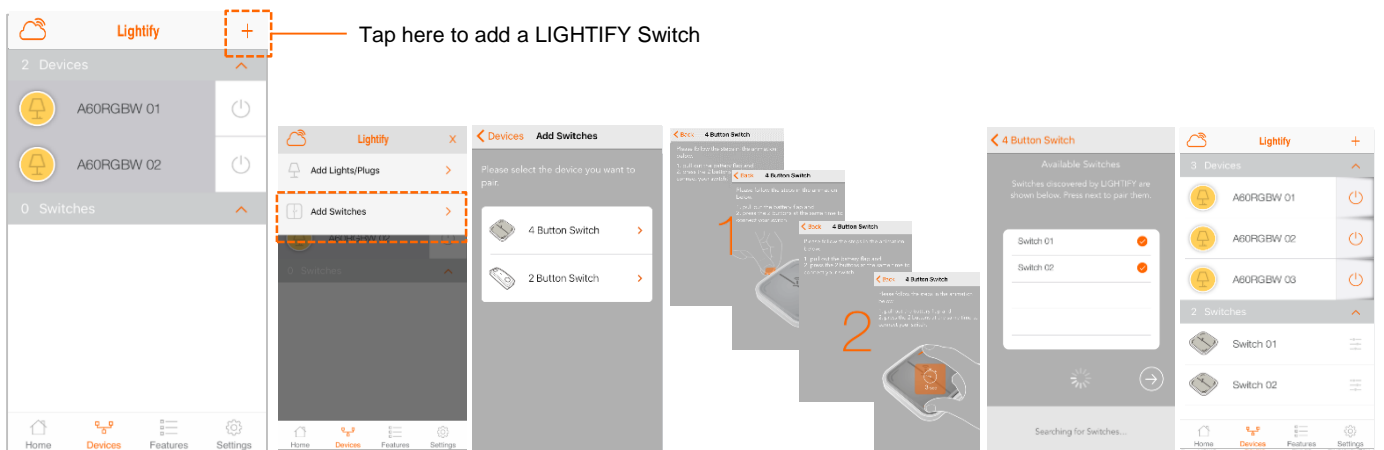


For Tunable White products there are also some dynamic scenes available.

Light is OSRAM

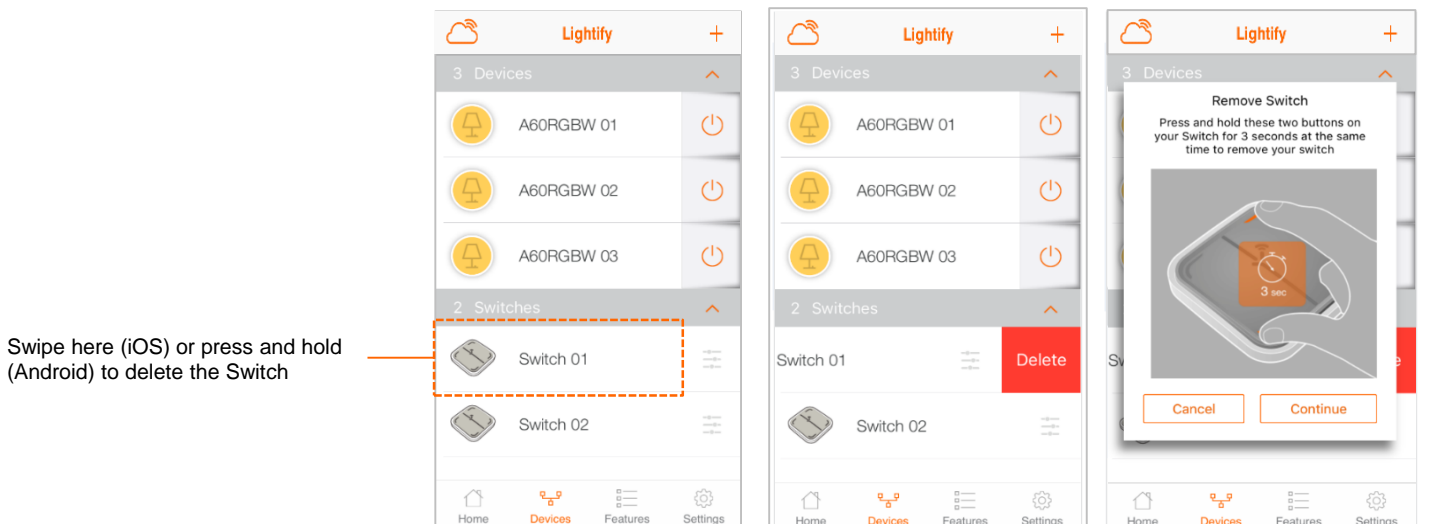
Devices

Add product: Switch



Follow the instructions shown

Delete Switch



Follow the instructions shown and confirm with „Continue“

Light is OSRAM

Devices

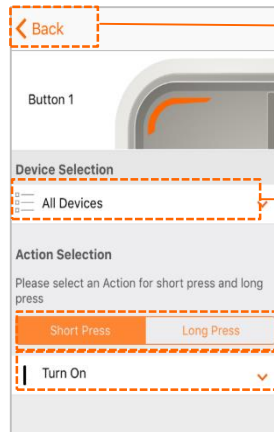
Switch Configuration



Tap here to change the major settings and to rename the Switch



Tap here to change major settings of the chosen button

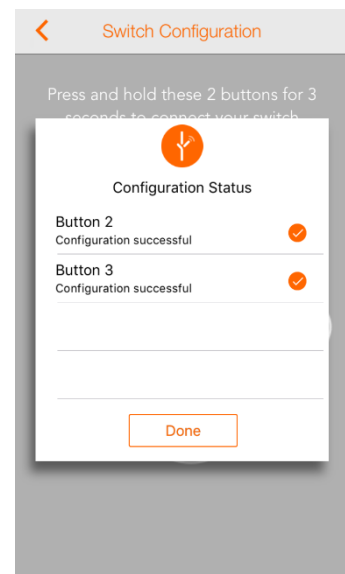
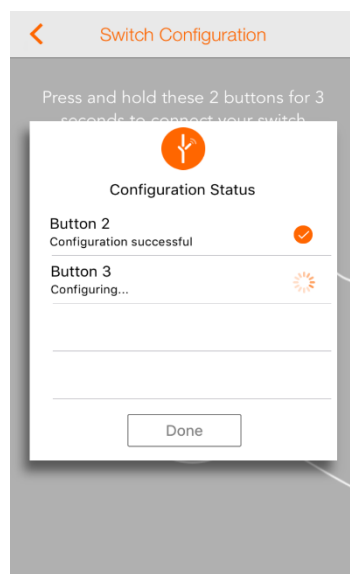
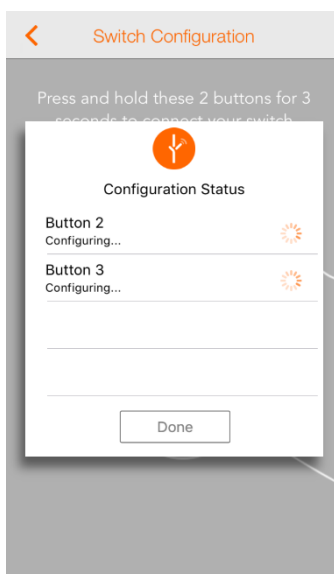


4. Choose Device, short or long press and action (Step 1-3), - Afterwards tap „Back“

1. Choose Device or Group - Afterwards tap „Back“

2. Choose long or short keypress option

3. Choose action and - Afterwards tap „Back“

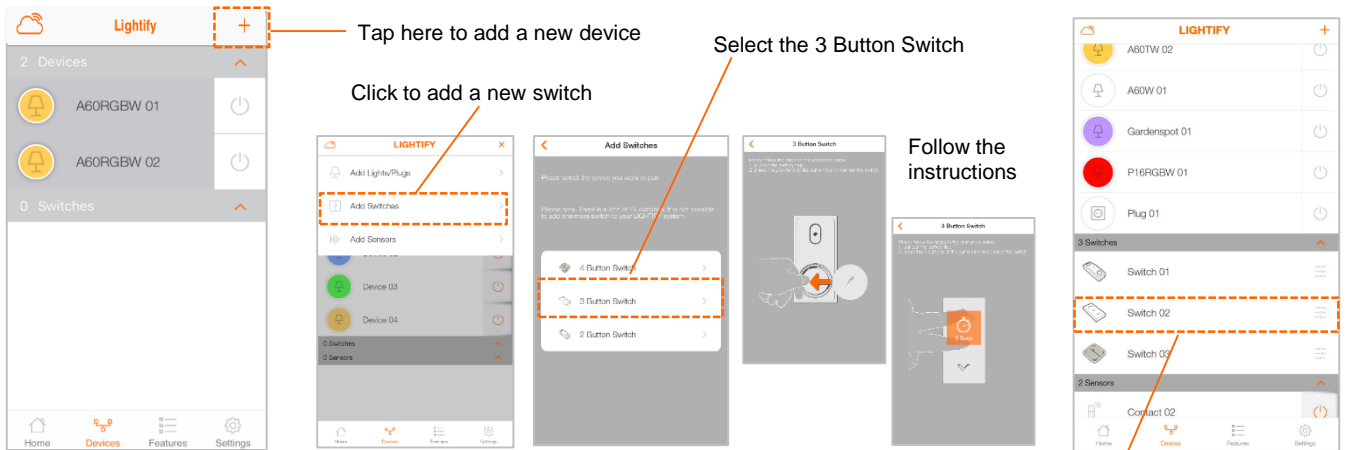


Please wait until the configuration is successfully approved showing an orange tick. Afterwards tap „Done“.

Light is OSRAM

Devices

Add product: 3 Button Switch



Tap here to add a new device

Select the 3 Button Switch

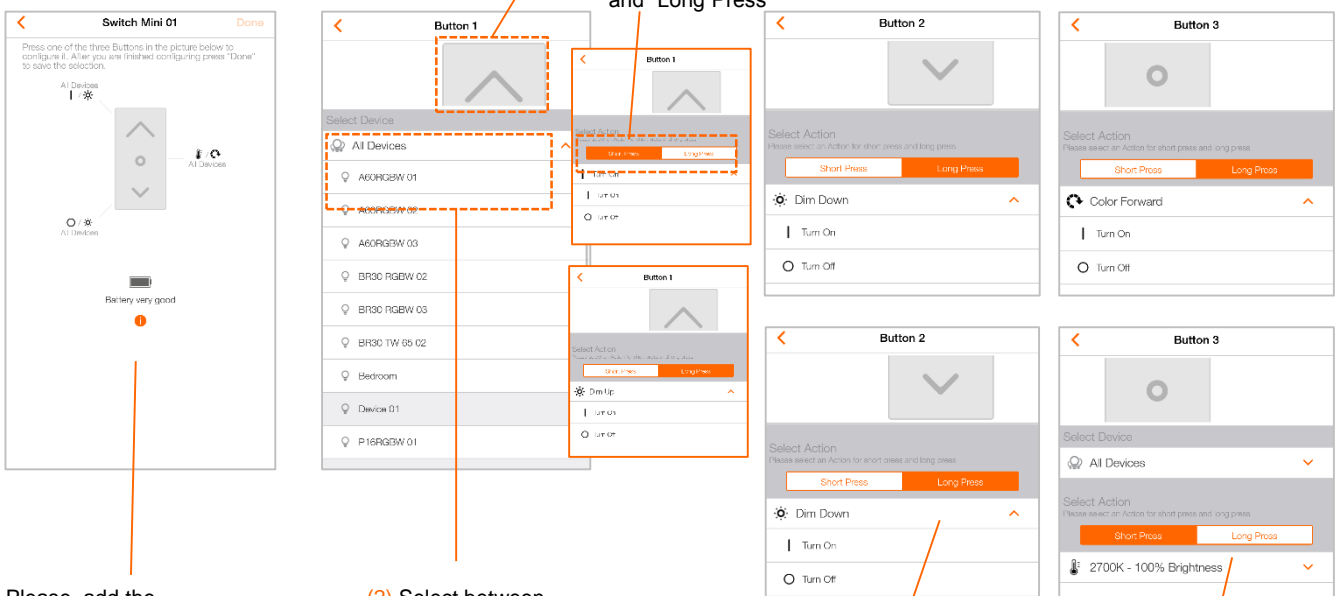
Click to add a new switch

Follow the instructions

After the installation you will find the 3 Button Switch in the menu under "Devices"

(1) Push the "Button 1" to start the configuration

(3) Select between "Short Press" and "Long Press"



Please, add the configuration to each button. Afterwards you can click on "Done" and the settings will be saved.

(2) Select between Devices and Groups

Now configure "Button 2": first select your device or group and in the next step, choose between the buttons "Short Press" and "Long Press".

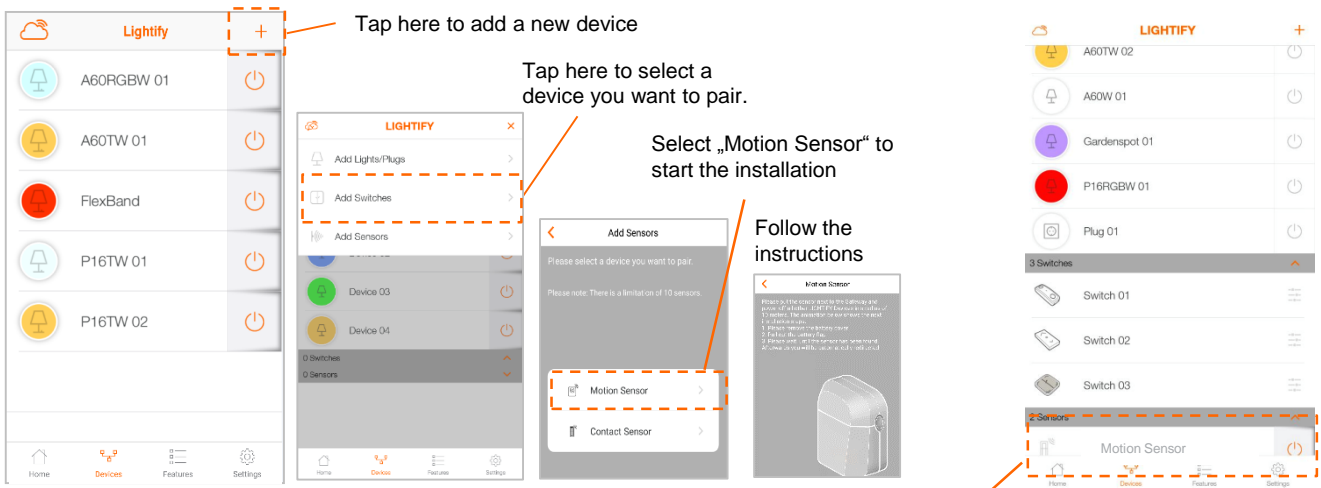
Now configure "Button 3": first select your device or group and in the next step, choose between the buttons "Short Press" and "Long Press".

* The steps for installing, configuring, and deleting switches also apply to 3 Button Switch

Light is OSRAM

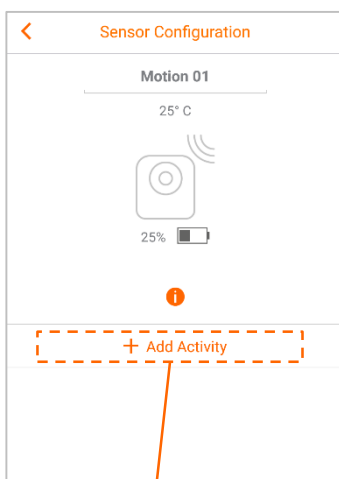
Devices

Add product: Motion Sensor

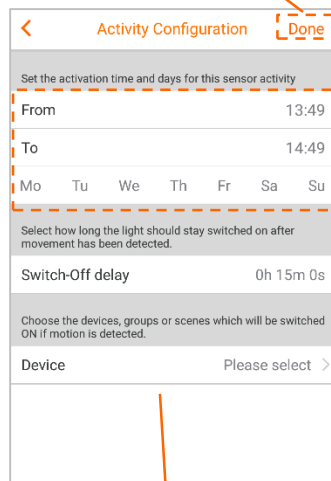


Select in the menu „devices“ your sensor and click on the motion sensor

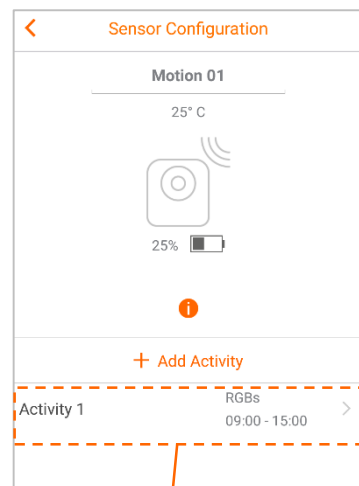
(2) Are all attitudes to the activity finished, click on „Done“



Click on „+ Add Activity“ to add the settings



(1) In this field you can set the activation time and days for the sensor and choose the device, groups or scenes which will be switched on.



Click on „Activity“ to add change or delete the settings

Light is OSRAM

Devices

Add product: Contact Sensor

Tap here to add a new device

Tap here to select the Sensor you want to pair.

You will find the Contact Sensor in your device overview

Follow the instructions

(2) Are all attitudes to the activity finished, click on „Done“

Click on „+ Add Activity“ to add the settings

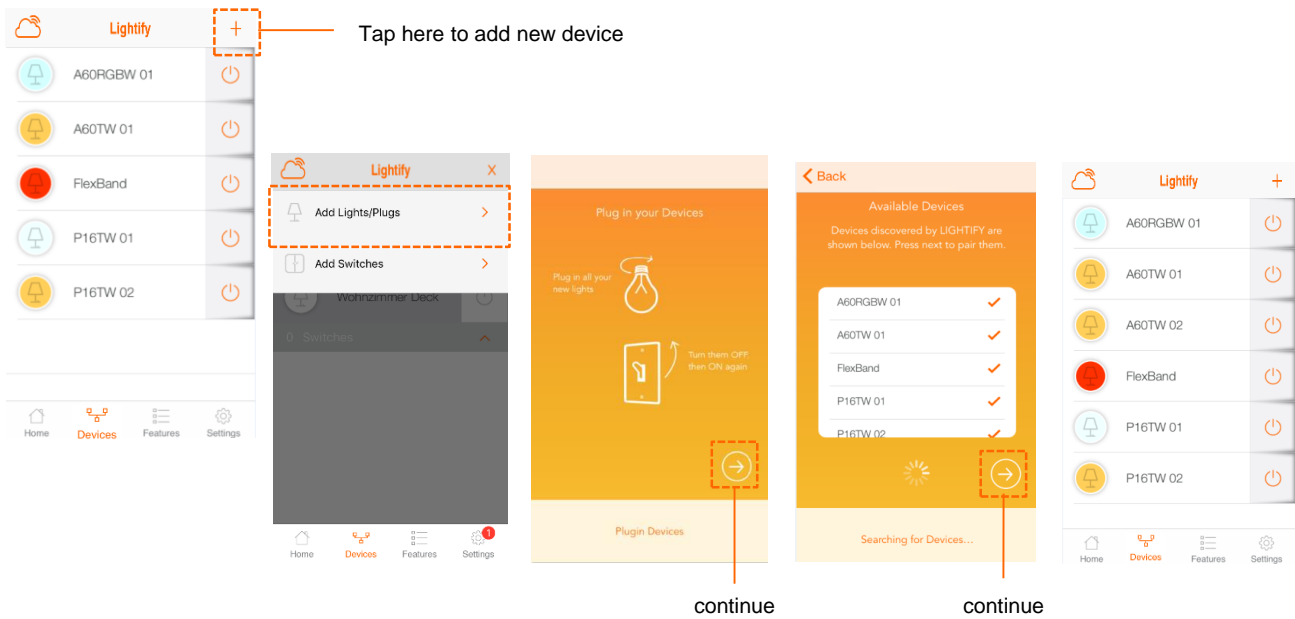
(1) In this field you can set the activation time and days for the sensor and choose the device, groups or scenes which will be switched on.

Click on „Activity“ to add change or delete the settings

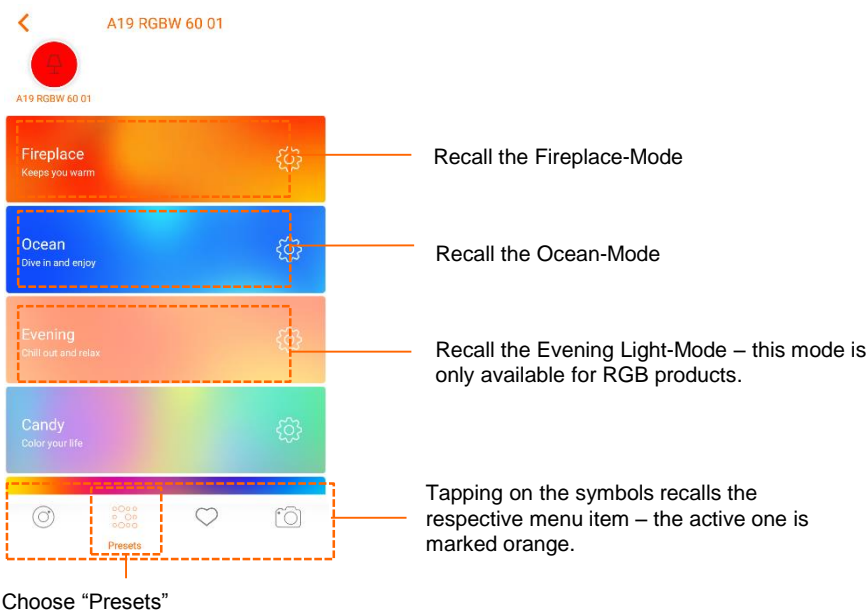
Light is OSRAM

Devices

Add product: lights / Plug(s)



Presets



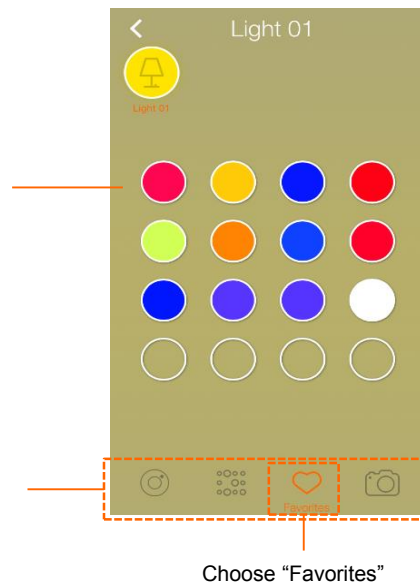
Light is OSRAM

Devices

Favorites

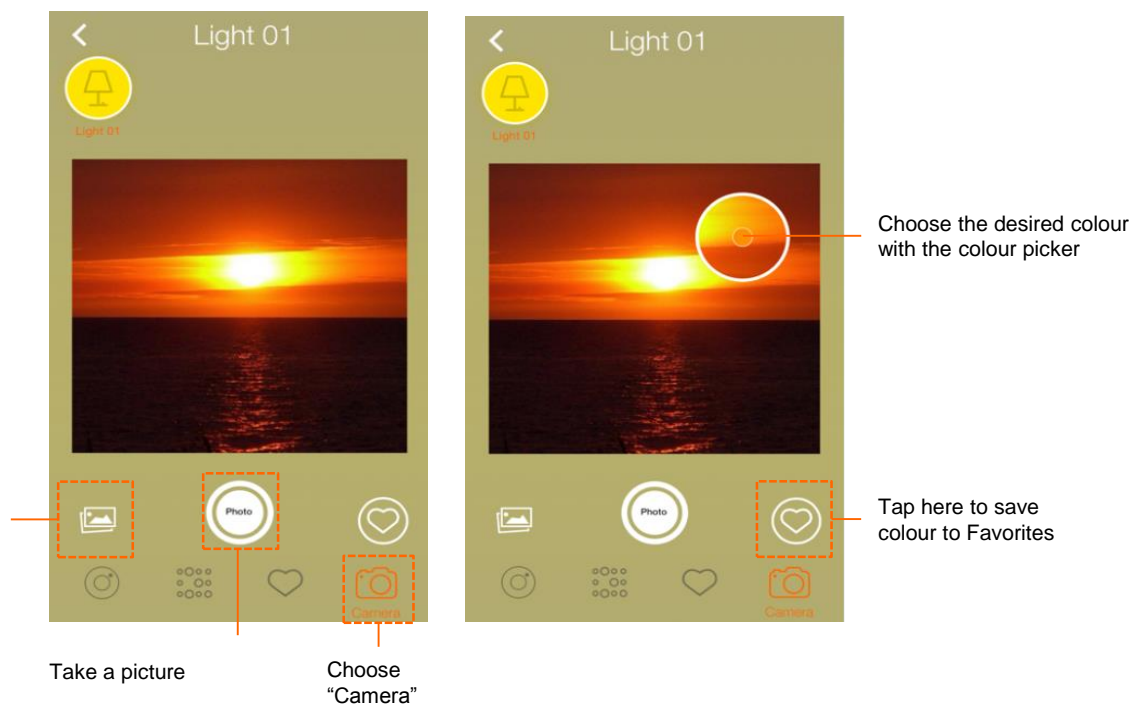
Tap on the Favorite you wish to recall

Tapping on the symbols recalls the respective menu item – the active one is marked orange.



Camera

Choose one of your own photos – for this feature you need to allow access when prompted



Light is OSRAM

Extras

Scheduler

Tap here to add a new Scheduler

Tap '+' to add schedule.

Tap here to save Scheduler

Tap here to define start time

Tap here to define end time

Here you can choose the day where the Scheduler is activated. The selected days are marked orange.

Here you can choose the scene, group or light to which the Scheduler should be applied.

Swipe here right to left (iOS) or press and hold (Android) to delete the Scheduler

Timer past midnight will be marked

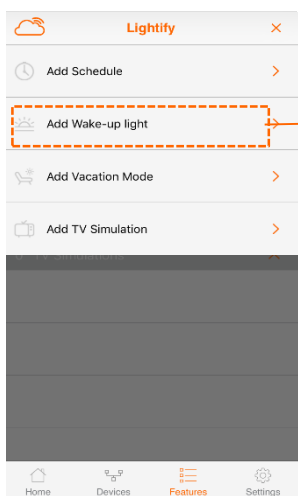
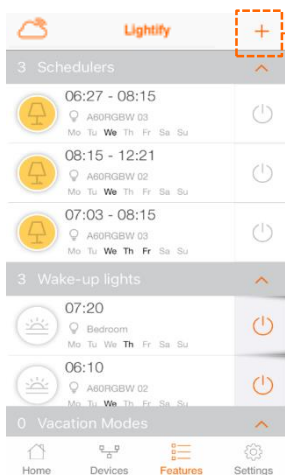
Light is OSRAM

Extras

Wake-Up Light

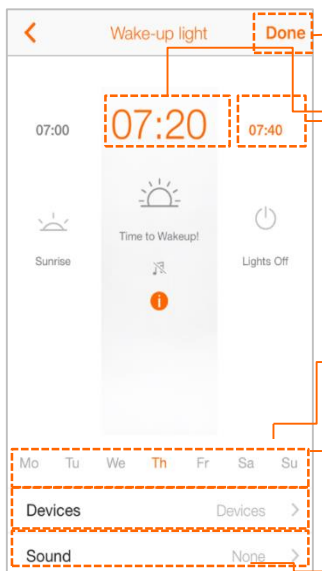
Starting from a warm light colour, the LIGHTIFY Wake-up Light will dim up from a low brightness to a bright daylight and switch off at a desired time. Improved Wake-Up Light: Prolong or shorten the sunrise time per your needs.

Tap here to add a Wake-Up Light



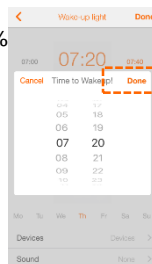
Afterwards tap here

Tap here to save configurations



Tap here to define the waking time (100% brightness / daylight)

Tap here to define the end time



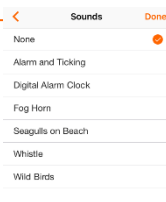
Afterwards tap „Done“

Choose the weekday at which the Wake-up Light is active. Chosen weekdays are coloured in orange.

Choose a device or entire group for which the Wake-up Light should be activated.



Choose an optional Sound to help you into the day.



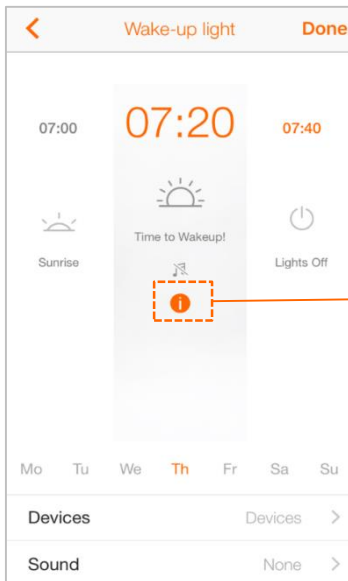
Please note:

The acoustic alarm is set to run only on the smartphone/tablet it has been created with.

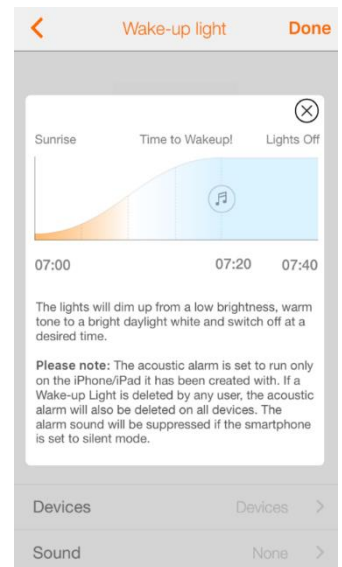
Light is OSRAM

Extras

Wake-Up Light Information

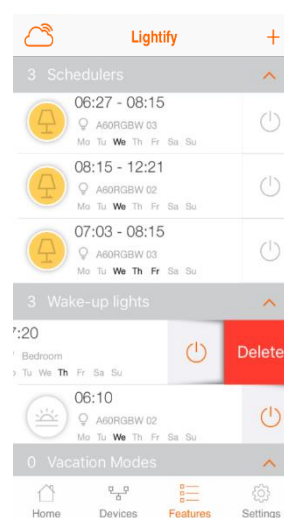
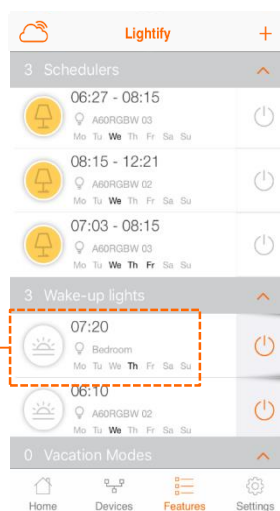


Tap here to receive further information about the Wake-Up Light



Delete Wake-up Light

Swipe here (iOS) or press and hold (Android) to delete the Wake-Up Light



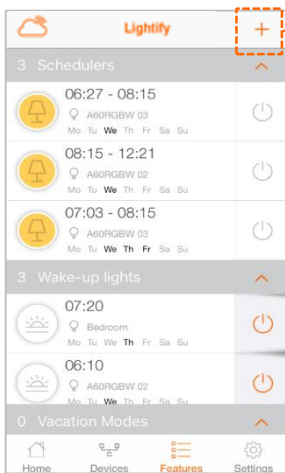
Please note:

If a Wake-up Light is deleted by any user, the acoustic alarm will also be deleted on all devices. The alarm sound will be suppressed if the smartphone is set to silent mode.

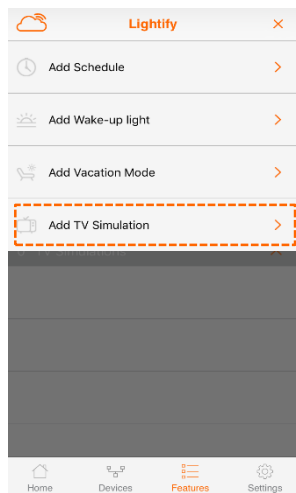
Light is OSRAM

Extras

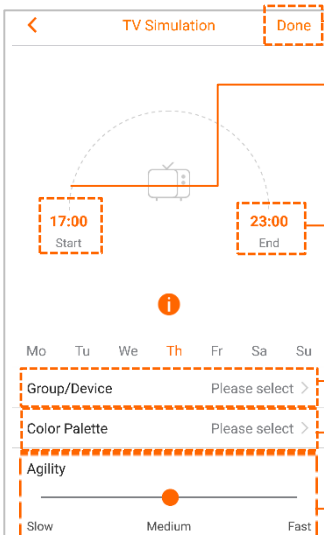
TV Simulation



Tap here to add TV Simulation



Afterwards tap here



Tap here to save configurations

Tap here to define start time

Tap here to define the end time

Choose the Group or Device to which the TV Simulation should be applied to.

Choose the Color Palette suitable for your TV-Programm

Choose the Agility you wish



Afterwards tap „OK“



Light is OSRAM

Settings

General information, profile- and system settings

LIGHTIFY

Info

- About > Version number, Imprint and Terms of Use
- Help > Link to FAQs
- Acknowledgements > Acknowledgements
- Rate the App > Rate the App

User

- Account > Account Information & Delete Account

Partners

- Works with Nest > Connection to Nest (1) (see screenshot)
Link from LIGHTIFY to Nest Home or Away

System

- General Settings > General Settings (2) (see screenshot) e.g. choose time zone
- Fade On/Off > Set the fading duration for Light On/Off. (3) (see screenshot)
- System Update > Available System Updates
- System Reset > Reset System to factory new (4) (see screenshot)
- Delete Preferences > Delete groups & scenes or Favorites (5) (see screenshot)
- Logout > Logout

About

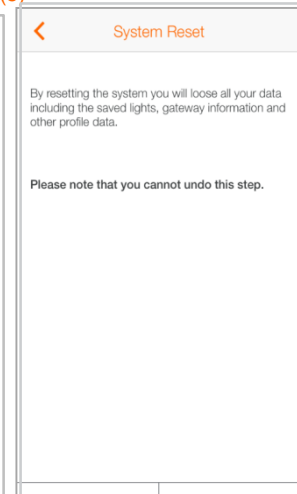
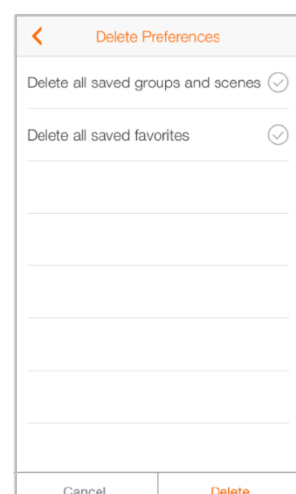
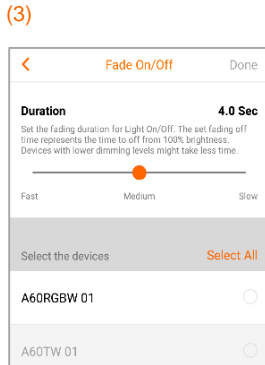
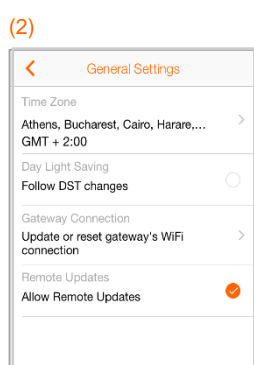
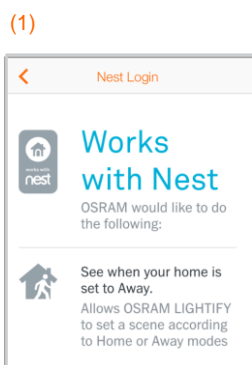
Version v1.9.1

Represented by Dr. Olaf Berlien, Ingo Bank and Dr. Stefan Kampmann
Marcel-Breuer-Straße 6
80807 Munich
Germany

Phone: +49 89 6213-0
Fax: +49 89 6213-2020
E-mail: webmaster@osram.com
Internet: www.osram.com
www.osram.de

Supervisory Board Chairman: Peter Bauer
Chairman of the Managing Directors: Dr. Olaf Berlien
Responsible according to the German Interstate Broadcasting Agreement (§ 55 para. 2):
Gunnar Moos

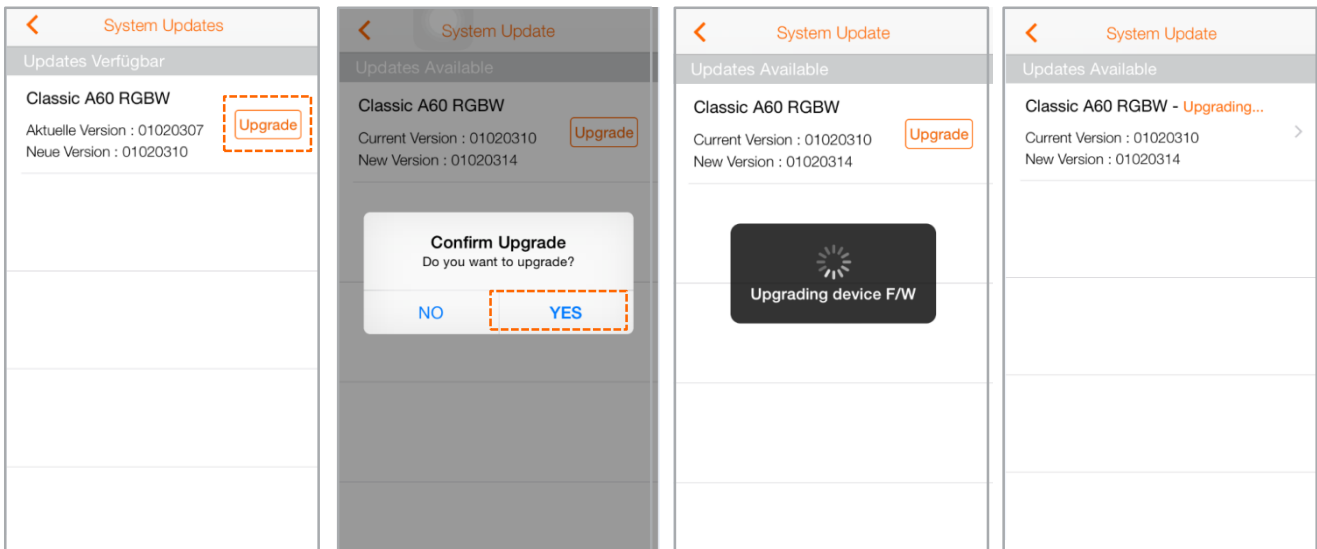
Terms and Conditions



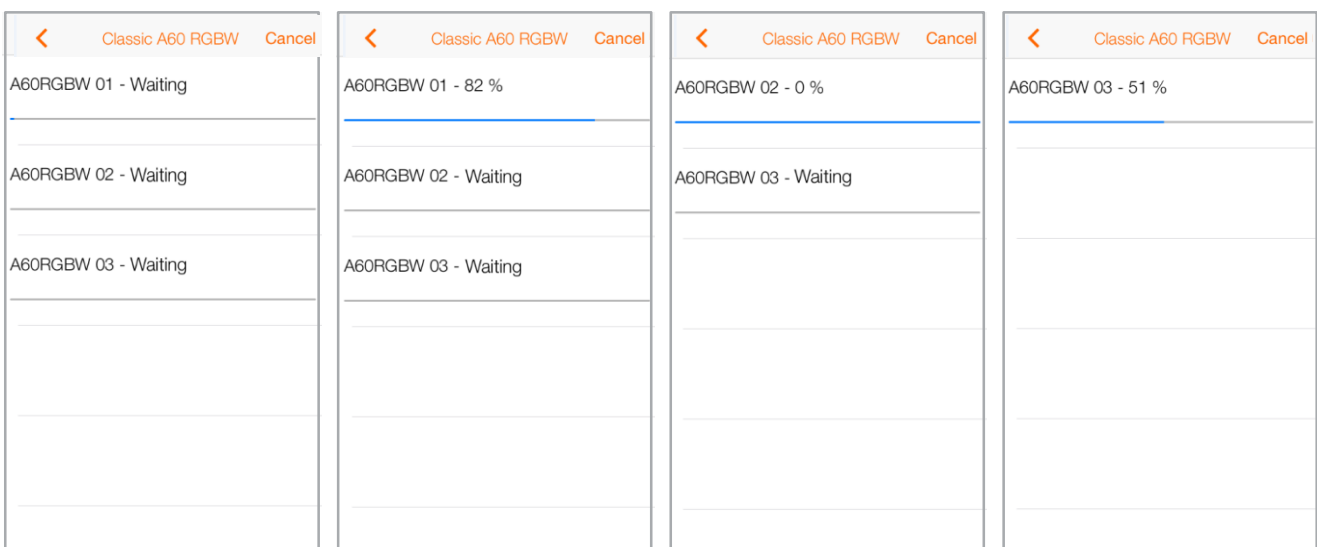
Light is OSRAM

Settings

Update incl. Progress Bar



- 1) Start the Update
- 2) Confirm with „YES“
- 3) Update is starting
- 4) Tapping on the next arrow will show all Devices that require an update (including progress bar)



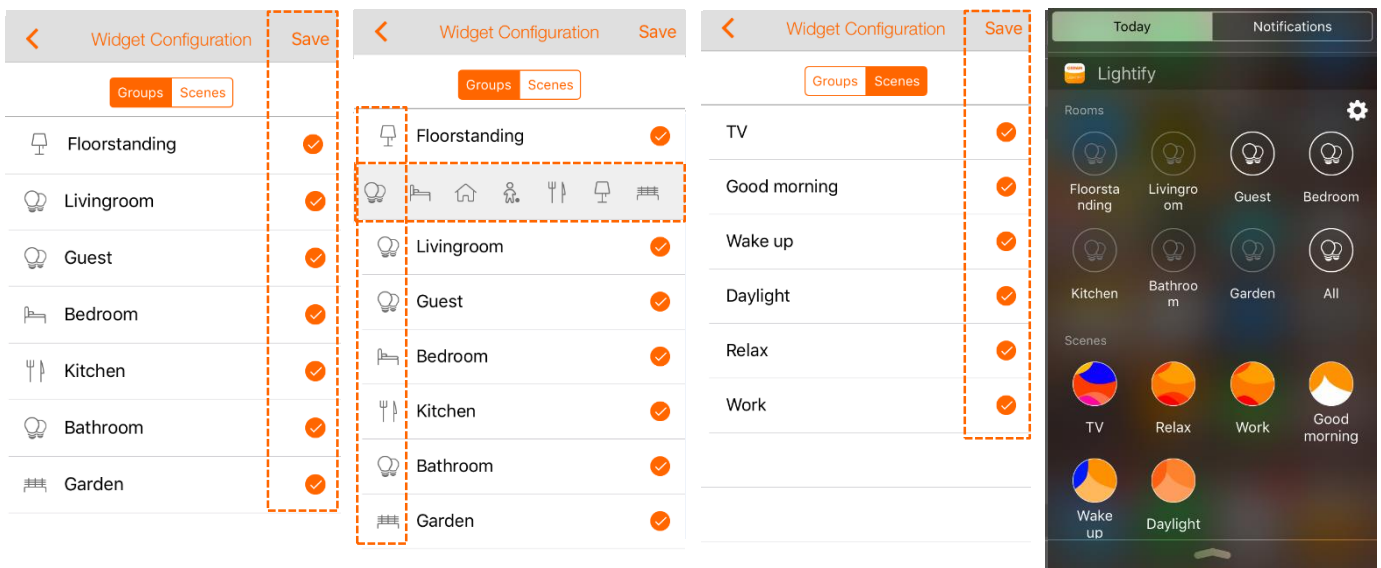
- 5) The progress is displayed for all devices that require an update. Devices that are already up to date are not displayed. The Update can be aborted (press „Cancel“) and restarted (see step 1) at any time.

Light is OSRAM

Settings

Widgets Configuration (only for iOS)

Please make sure the LIGHTIFY App and Gateway are up to date! Usage of Widgets are only possible with the Home WiFi connection.



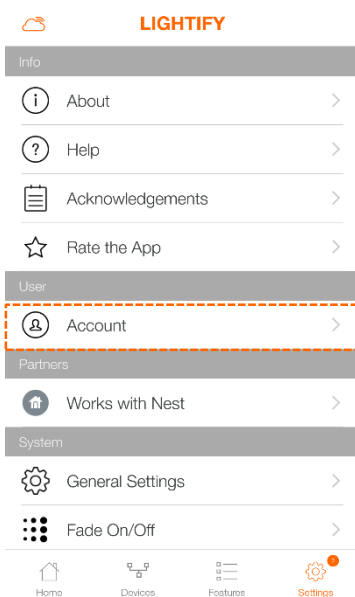
- 1) Tap all Groups you wish to be displayed as Widgets
- 2) All symbols can be changed through tapping accordingly. Afterwards tap „Save“.
- 3) Tap all Scenes you wish to be displayed as Widgets. Afterwards tap „Save“.
- 4) All chosen groups and scenes are now displayed as Widgets and can be selected without opening the LIGHTIFY App.

Light is OSRAM

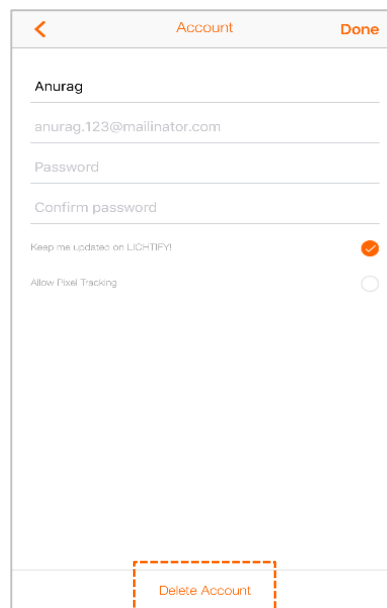
Settings

Delete Account

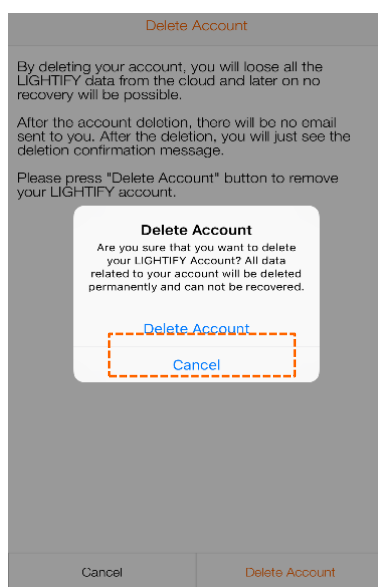
You can delete your LIGHTIFY user account from the app if you face any issues with your account.



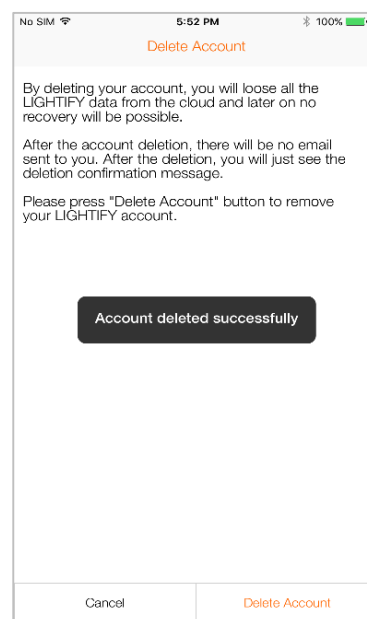
1) Choose „Settings“ and tap on “Delete Account“



2) Tap on “Delete Account“



3) Same here tap „Delete Account“



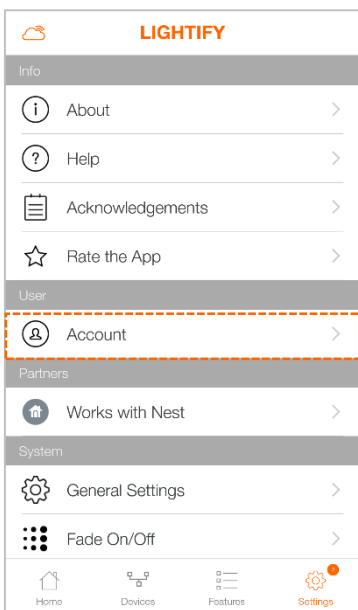
4) Account deleted successfully

Light is OSRAM

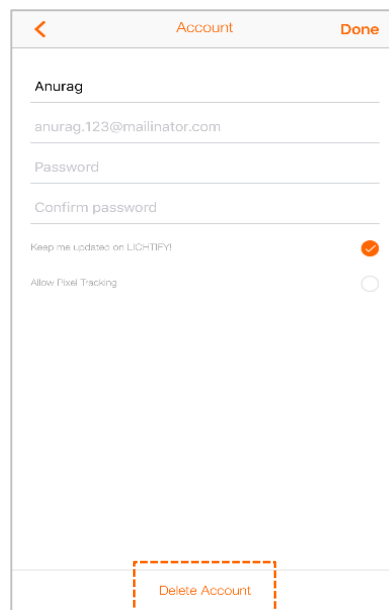
Settings

Router exchange

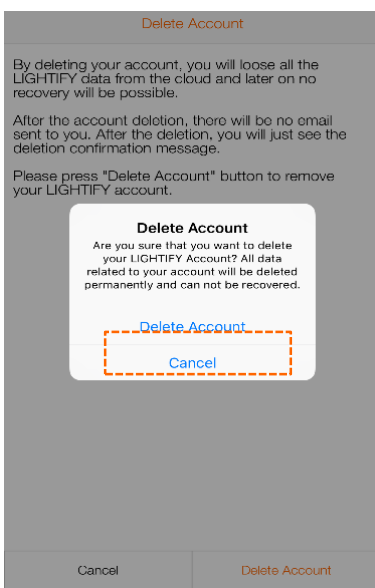
You can delete your LIGHTIFY user account from the app if you face any issues with your account.



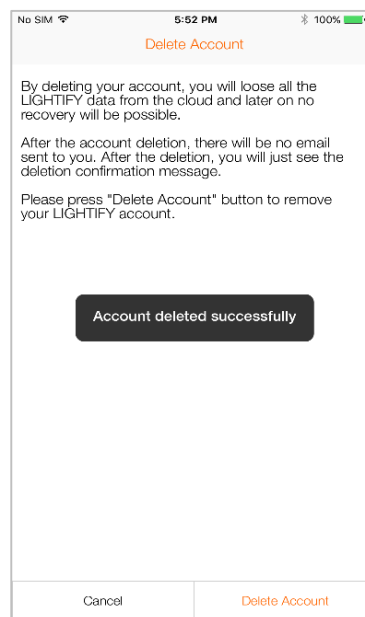
1) Choose „Settings“ and tap on “Delete Account“



2) Tap on “Delete Account“



3) Same here tap „Delete Account“



4) Account deleted successfully